



Title:

**Mandatory Service Bulletin – Aileron Control Bellcrank Attachment
Inspection**

Document number:

SB_SONG_02

Title	Document no.	Revision	Page	Pages
Mandatory Service Bulletin – Aileron Control Bellcrank Attachment Inspection	SB_SONG_02	R00	1	5

1. Date

24.10.2024

2. Subject

Aileron control bellcrank attachment inspection

3. Affected s.n.

All

4. Reason

Some s.n. may have the aileron bellcrank in the fuselage installed without the L-console from the top side. This attachment is not rigid enough and may cause the loose of bellcrank and lost of aileron control. See the figure 1 for the position of the affected bellcrank.

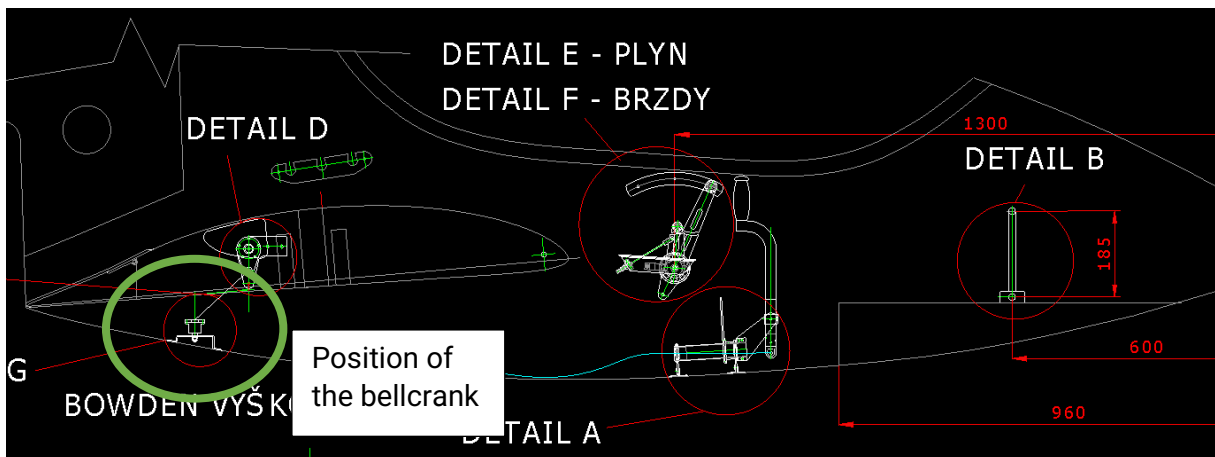


Figure 1: Position of affected bellcrank

5. Correction

- 1) Check how is the bellcrank attached in your SONG.
- 2) If your bellcrank is attached as on the figure 2 (below) – no further action is required.

Title	Document no.	Revision	Page	Pages
Mandatory Service Bulletin – Aileron Control Bellcrank Attachment Inspection	SB_SONG_02	R00	2	5

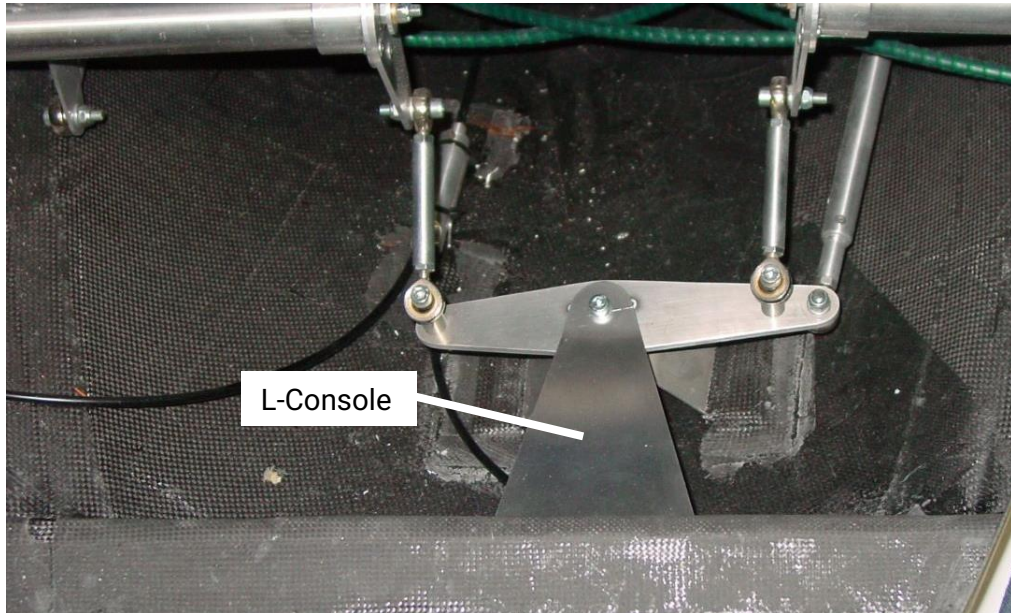


Figure 2: Correct installation of this bellcrank

- 3) If your bellcrank is not installed as shown on the figure 2, continue with following steps:

Title	Document no.	Revision	Page	Pages
Mandatory Service Bulletin – Aileron Control Bellcrank Attachment Inspection	SB_SONG_02	R00	3	5

4) Produce L-console and bushings as shown on figure 3:

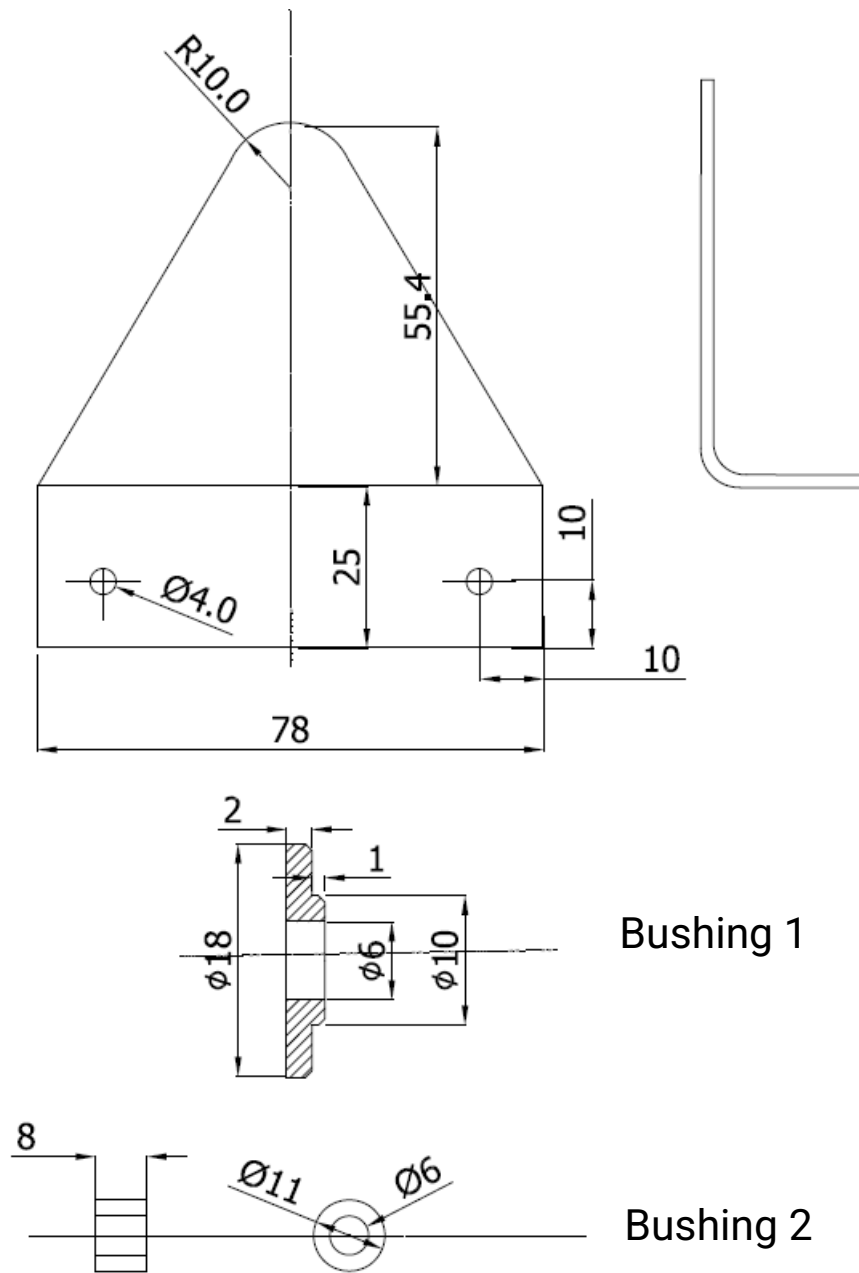
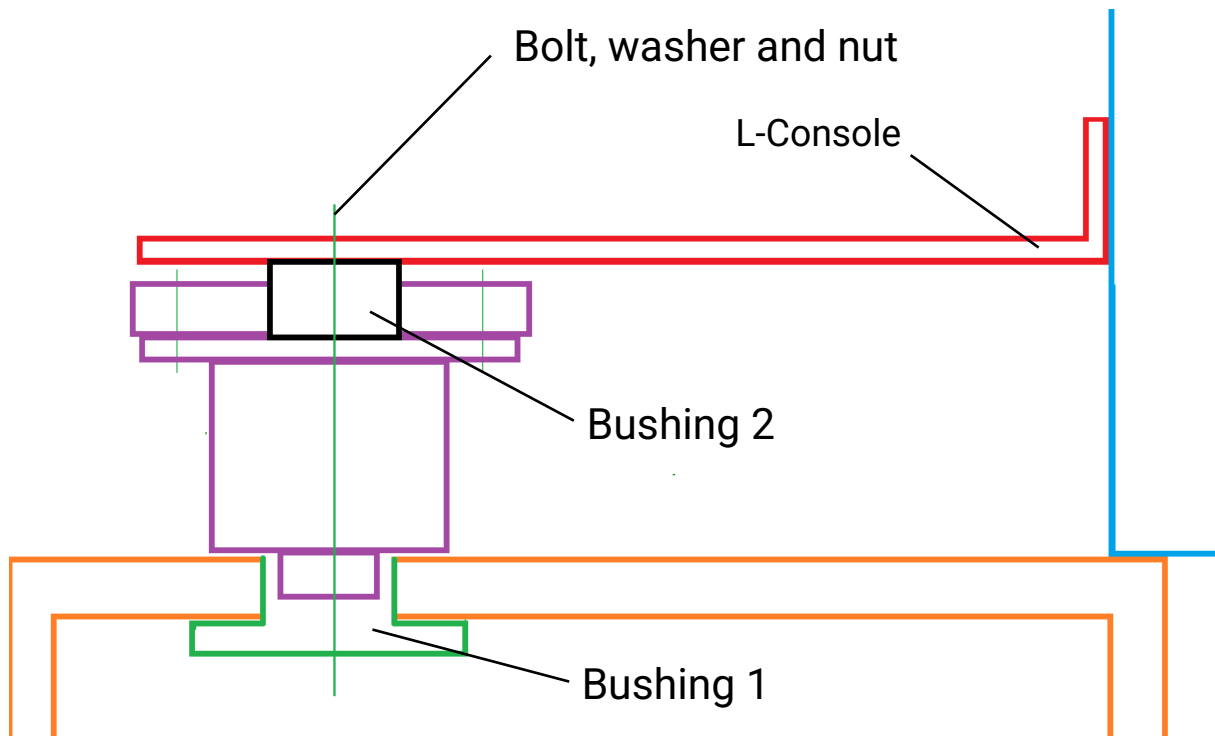


Figure 3: L-console

Title	Document no.	Revision	Page	Pages
Mandatory Service Bulletin – Aileron Control Bellcrank Attachment Inspection	SB_SONG_02	R00	4	5

5) Support the bellcrank from the top side with this L-console, as shown on the figure 4.



6. Time of compliance

Before the next flight.

7. Performed by

Owner/operator

8. Expenses covered by

Owner/operator

9. Documentation

Log this service bulletin into the airplane maintenance log book when it's done.

Title	Document no.	Revision	Page	Pages
Mandatory Service Bulletin – Aileron Control Bellcrank Attachment Inspection	SB_SONG_02	R00	5	5